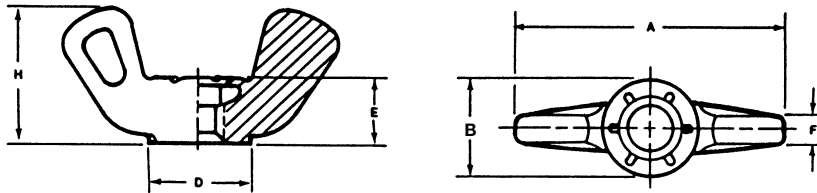




The bright purple nylon insert identifies Tork Lok Nuts and denotes precision manufacture from the finest materials, to assure top product performance. "Look for the Royal Purple Insert"



Size	Continental-Aero Part Number	Thread † See Note	Weight Lbs./C	A (Ref)	B (Ref)	D (Ref)	E (Ref)	F (Ref)	H (Ref)
# 8	31WC82	8-32	0.92	1.031	.375	.375	.234	.100	.500
	31WC86	8-36							
# 10	31WC04	10-24	0.90	1.031	.375	.375	.234	.100	.500
	31WC02	10-32							
#12	31WC124	12-24	1.60	1.125	.438	.438	.304	.110	.546
	31WC128	12-28							
1/4	31WC040	1/4-20	1.60	1.250	.438	.438	.304	.125	.594
	31WC048	1/4-28							
5/16	31WC058	5/16-18	2.50	1.500	.562	.562	.329	.155	.718
	31WC054	5/16-24							
3/8	31WC066	3/8-16	2.30	1.500	.562	.562	.349	.155	.718
	31WC064	3/8-24							

Material: Die-cast Zamak Alloy

Plating: Zinc, plain-unplated, and zinc and yellow

† **Note:** Other thread sizes are available from stock or on application.

Locking Insert: Purple (250°F max performance).