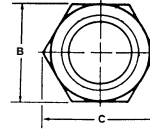
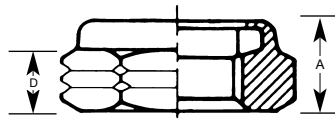




The bright purple nylon insert identifies Tork Lok Nuts and denotes precision manufacture from the finest materials, to assure top product performance. "Look for the Royal Purple Insert"



STAKE MARKS AVAILABLE

DOUBLE OR SINGLE NOTCHED CORNERS ON HEX INDICATE HEAT TREATED TO RC 26-34

Size	Continental-Aero Part Number *See Note	Thread †See Note	Standard Container Quantity	Weight Lbs./C (Steel)	A Height **See Note	B Across Flats	C (Ref) Across Corners	D (Ref) Wrench Pad
1/4	5XNTE1610-040	1/4-20	8000	0.50	.203	.439-.430	.482	.125
	5XNTE1610-048	1/4-28						
5/16	5XNTE1610-058	5/16-18	6000	0.80	.250	.502-.492	.552	.158
	5XNTE1610-054	5/16-24						
3/8	5XNTE1610-066	3/8-16	4000	0.95	.266	.564-.553	.622	.150
	5XNTE1610-064	3/8-24						
7/16	5XNTE1610-074	7/16-14	3000	1.30	.313	.627-.615	.694	.225
	5XNTE1610-070	7/16-20						
1/2	5XNTE1610-083	1/2-13	2000	2.00	.313	.752-.741	.837	.190
	5XNTE1610-080	1/2-20						
9/16	5XNTE1610-092	9/16-12	1500	3.50	.359	.877-.865	.978	.225
	5XNTE1610-098	9/16-18						
5/8	5XNTE1610-101	5/8-11	1000	3.90	.391	.940-.928	1.051	.265
	5XNTE1610-108	5/8-18						
3/4	5XNTE1610-120	3/4-10	800	5.20	.406	1.064-1.052	1.191	.288
	5XNTE1610-126	3/4-16						
7/8	5XNTE1610-149	7/8-9	500	8.00	.469	1.252-1.239	1.403	.340
	5XNTE1610-144	7/8-14						
1	5XNTE1610-168	1-8	300	14.00	.547	1.440-1.427	1.615	.405
	5XNTE1610-164	1-14						
1 1/8	5XNTE1610-187	1 1/8-7	300	19.00	.641	1.627-1.614	1.826	.500
	5XNTE1610-182	1 1/8-12						
1 1/4	5XNTE1610-207	1 1/4-7	205	27.00	.734	1.814-1.801	2.038	.523
	5XNTE1610-202	1 1/4-12						
1 3/8	5XNTE1610-226	1 3/8-6	144	33.00	.790	2.008-1.973	2.249	.493
	5XNTE1610-222	1 3/8-12						
1 1/2	5XNTE1610-246	1 1/2-6	120	43.00	.797	2.197-2.159	2.416	.565
	5XNTE1610-242	1 1/2-12						

Locking Insert: Purple nylon (250°F max. performance) white and staked available.

* **Note:** See page 2 for parts nomenclature; substitute digits for material and finish in place of "xx" in part numbers above.

** **Note:** TOLERANCES — 1/4 through 3/8: ±.015; 1" through 1 1/2: ±.031.

† **Note:** Other thread sizes are available from stock or on application.

Material—Steel (AISI C1137 or equivalent). Heat-Treated Rockwell C 26-34.

NTE8 (NTE1610) SERIES