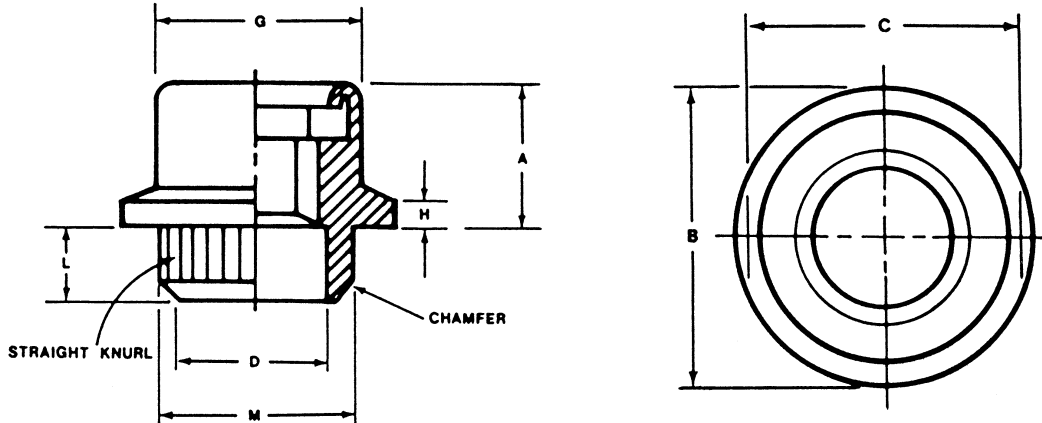




## NCFMA SERIES



Continental-Aero Part Number *See Note	Thread †See Note	Weight Lbs./C (Steel)	A	B	C	D	G	H	L	M
			±.010	±.005		+0.003 -0.002	Max	±.005	±.003	±.002
xxNCFMA1-26	2-56	.03	.075	.172		.098	.150	.020	.040	.129
xxNCFMA2-26		.03								
xxNCFMA1-40	4-40	.05	.090	.203		.130	.182	.020	.040	.160
xxNCFMA1-40		.05								
xxNCFMA1-62	6-32	.11	.130	.281	.238	.154	.242	.025	.040	.192
xxNCFMA2-62		.12								
xxNCFMA1-82	8-32	.16	.160	.312	.281	.180	.268	.025	.040	.223
xxNCFMA2-82		.17								
xxNCFMA1-02	10-32	.21	.179	.344		.212	.287	.030	.040	.254
xxNCFMA2-02		.22								

**\*Note: Nut Material & Finish:** See the list below for material and finish digits to use in place of "xx" in part numbers above.

**For the 1st digit, use:**  
 2 — If the part is made of low carbon steel  
 7 — If the part is made of 18-8 stainless steel

**For the 2nd digit, use:**  
 9 — If the finish is plain  
 2 — If the finish is cadmium.  
 1 — If the finish is zinc.

**NCFMA1:** Indicates #1 shank length (L.040<sup>+0.003</sup>) and can be used in sheet thicknesses up to .050 with practical flushness achieved in thicknesses as low as .030.

**NCFMA2:** Indicates #2 shank length L.060<sup>+0.003</sup>) and should be used in sheet thicknesses of .050 or heavier.

**† Note: Thread Sizes:** Other thread sizes are available from stock or on application.  
**Locking Insert:** Purple nylon (250°F max performance).  
**Torque:** Per Continental-Aero procurement specifications.